

**GALAXIE**

**MODEL G140S, G160S, G160HS, G180S**

THIS PARTS LIST IS FOR MACHINES  
AFTER THE SERIAL NUMBER 206010

# PARTS LIST



**ADVANCE**  
MACHINE COMPANY

INTERNATIONAL HEADQUARTERS, Spring Park, Minnesota 55384-0275

EUROPE, 4 Rue Jean Engling, L-1466 Luxembourg

CANADA, 1295 Crestlawn Drive, Mississauga, Ontario L4W 1A9

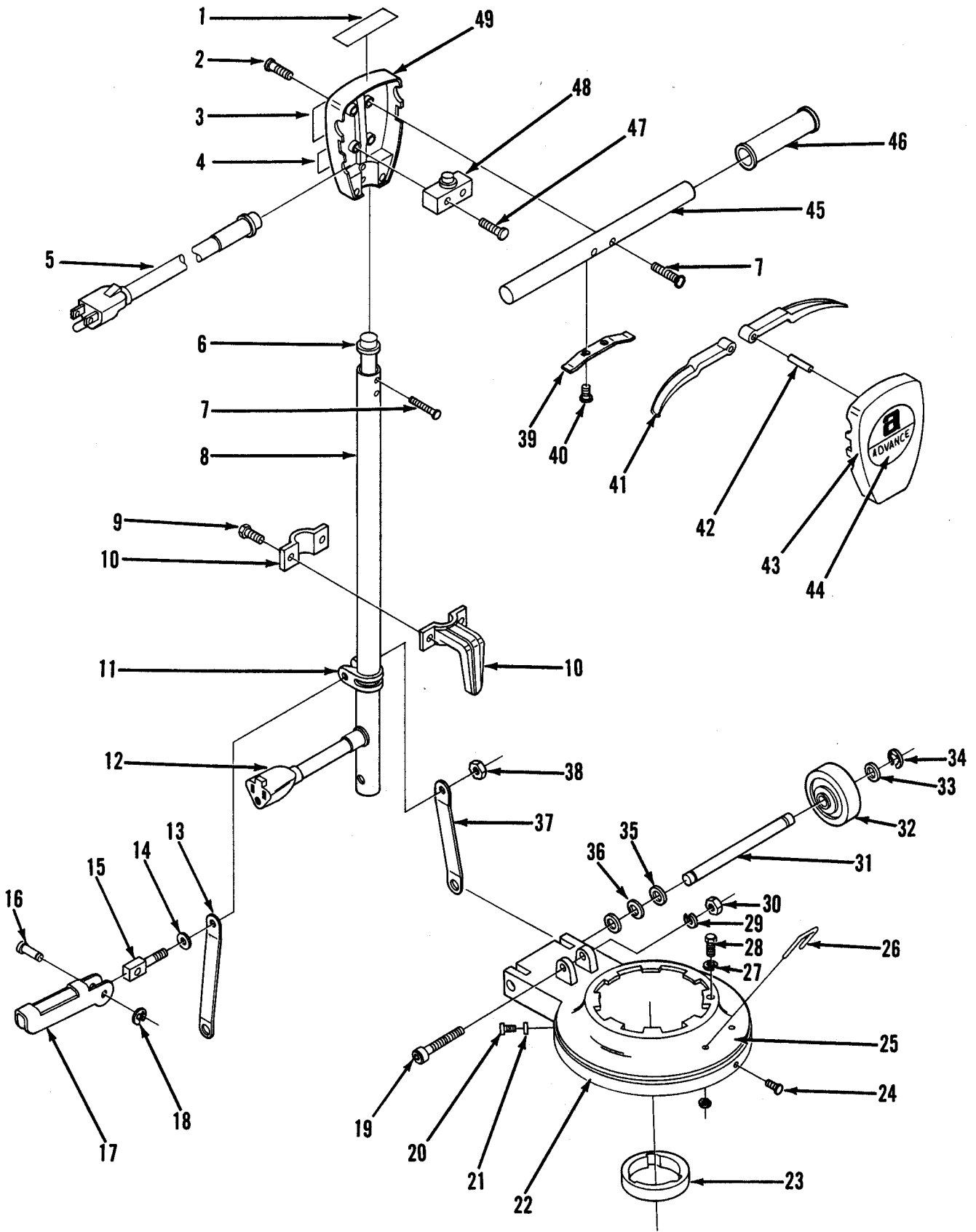
© 1985 Advance Machine Co. FORM NO. 042 123



12/84

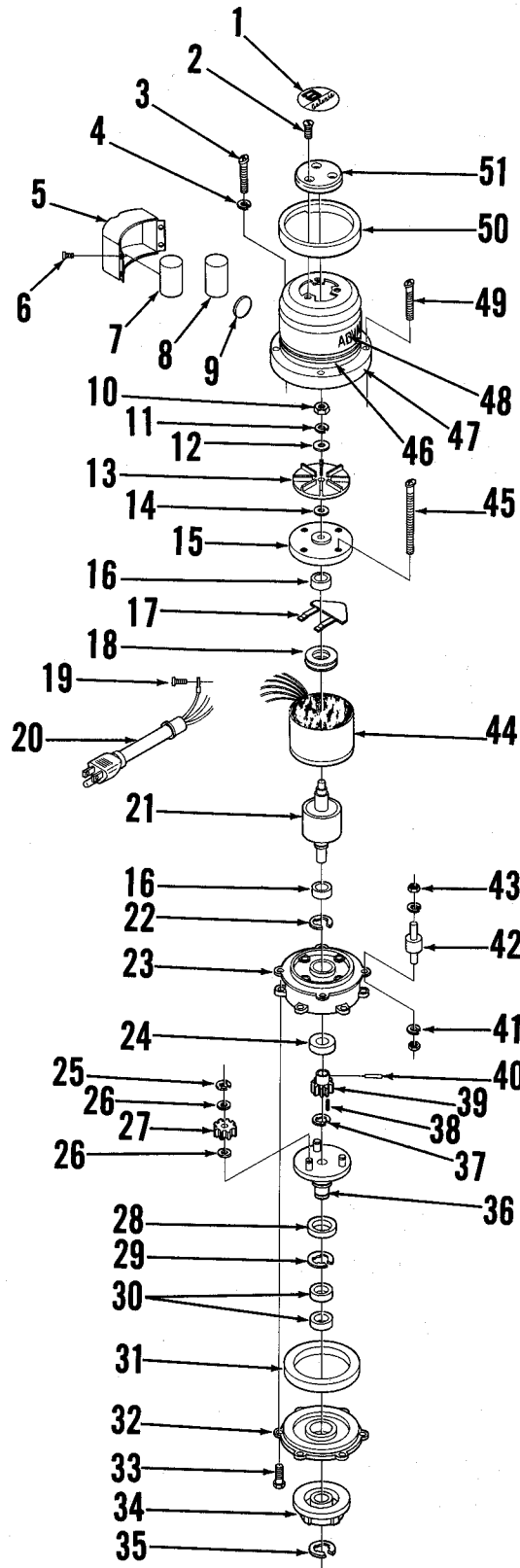
# INDEX FOR FORM NUMBER 042123

<u>Description</u>	<u>Location</u>	<u>Page</u>
Handle & Base	C2	1
Motor	C4	3



## HANDLE &amp; BASE ASSEMBLY

ITEM	PART NO.	QTY	DESCRIPTION
1	016 448	1	DECAL, WARNING
2	155 102	4	SCREW
3	016 450	1	DECAL, WARNING
4	016 442	1	NAMEPLATE, ADVANCE
5	155 423	1	CORD ASSEMBLY, HANDLE G140S
	155 104	1	CORD ASSEMBLY, HANDLE G160S, G180S
	155 441	1	CORD ASSEMBLY, HANDLE G160HS
6	155 115	1	STRAIN RELIEF
7	155 109	4	SCREW
8	155 215	1	TUBE, HANDLE G140S, G160S, G160HS
	155 116	1	TUBE, HANDLE, G180S
9	155 117	2	SCREW
10	155 118	1	CORD HOOK
11	155 218	1	CLAMP, HANDLE TUBE G140S, G160S, G160HS
	155 119	1	CLAMP, HANDLE TUBE G180S
12	155 121	1	CORD, HANDLE TUBE
13	155 227	1	LINK ARM, RIGHT HAND G140S
	155 295	1	LINK ARM, RIGHT HAND G160S
	155 127	1	LINK ARM, RIGHT HAND G160HS, G180S
14	244 832	1	WASHER
15	155 426	1	BOLT, LOCKING CAM G140S, G160HS
	155 125	1	BOLT, LOCKING CAM G160S, G180S
16	155 425	1	PIN G140S, G160HS
	155 123	1	PIN G160S, G180S
17	155 122	1	CAM, COMPLETE LOCKING
18	155 124	1	RETAINING RING
19	155 238	1	SCREW G140S, G160S, G160HS
	155 137	1	SCREW, G180S
20	155 318	4	TAPPING SCREW, G160S, G160HS
	155 188	4	TAPPING SCREW, G180S
21	155 189	4	WASHER
22	155 241	1	BUMPER, HOUSING G140S
	155 465	1	BUMPER, HOUSING G160S
	155 444	1	BUMPER, HOUSING G160HS
	155 422	1	BUMPER, HOUSING G180S
23	155 290	1	LOCKING PLATE G140S, G160S
	155 463	1	LOCKING PLATE G160HS
	155 190	1	LOCKING PLATE G180S
24	155 191	1	TAPPING SCREW G180S
25	155 240	1	HOUSING G140S
	155 297	1	HOUSING G160S, G160HS
	155 139	1	HOUSING G180S
26	155 289	1	HANDLE W/NUTS G140S
	155 186	1	HANDLE W/NUTS G160S, G160HS, G180S
27	155 155	1	LOCKWASHER G180S
28	155 168	4	SCREW G160S, G160HS, G180S
29	155 133	1	LOCKWASHER G180S
30	155 138	1	NUT
31	155 231	1	AXEL G140S, G160S
	155 442	1	AXEL G160HS
	155 131	1	AXEL G180S
32	155 235	2	WHEEL G140S, G160S
	155 443	2	WHEEL G160HS
	155 134	2	WHEEL G180S
33	155 234	6	WASHER G140S
	155 234	2	WASHER G160S, G160HS
	155 133	2	LOCKWASHER G180S
34	155 135	2	RETAINING RING
35	155 329	4	WASHER G160S, G160HS
36	155 137	2	WAVE WASHER G140S, G160S, G160HS
37	155 228	1	LINK ARM, LEFT HAND G140S
	155 296	1	LINK ARM, LEFT HAND G160S
	155 129	1	LINK ARM, LEFT HAND G160HS, G180S
38	155 130	1	HUG LOCK NUT
39	155 110	1	SPRING
40	155 424	2	SCREW G140S, G160S, G160HS
	155 111	2	SCREW, G180S
41	155 113	2	LEVER, SWITCH
42	155 112	2	SPRING, PIN
43	155 114	1	HOUSING, SWITCH FRONT
44	017 019	1	DECAL, ADVANCE
45	155 203	1	HANDLE BAR G140S
	155 107	1	HANDLE BAR G160S, G160HS, G180S
46	155 204	2	GRIP, HANDLE G140S
	155 108	2	GRIP, HANDLE G160S, G160HS, G180S
47	155 106	2	SCREW
48	155 105	1	SWITCH
49	155 103	1	COVER, SWITCH HOUSING



## MOTOR ASSEMBLY

ITEM	PART NO.	QTY	DESCRIPTION	ITEM	PART NO.	QTY	DESCRIPTION
1	016 464	1	DECAL, GALAXIE G104S	40	155 435	1	SPRING PIN G140S, G160S
	016 466	1	DECAL, GALAXIE G160S		155 455	1	SET SCREW G160HS
	016 432	1	DECAL, GALAXIE G160HS		155 171	1	TAPER PIN G180S
	016 468	1	DECAL, GALAXIE G180S	41	155 155	8	LOCKWASHER G140S
2	155 146	3	SCREW	42	155 269	4	SHOCK ABSORBER G140S
3	155 192	1	SCREW	43	155 154	8	NUT G140S
4	155 193	1	LOCK WASHER	44	155 433	1	STATOR COMPLETE G140S
5	155 427	1	COVER, CAPACITOR G104S		155 468	1	STATOR COMPLETE G160S
	155 467	1	COVER, CAPACITOR G160S		155 451	1	STATOR COMPLETE G160HS
	155 143	1	COVER, CAPACITOR G160HS, G180S		155 165	1	STATOR COMPLETE G180S
6	155 142	4	TAPPING SCREW	45	155 431	4	SCREW G140S
7	155 428	1	CAPACITOR, MOTOR STARTING G140S		155 449	4	SCREW G160S, G160HS
	155 145	1	CAPACITOR, MOTOR STARTING G160S, G160HS, G180S		155 158	4	SCREW G180S
8	155 466	1	CAPACITOR, MOTOR RUNNING G160S	46	016 440	1	DECAL, STRIPE
	155 445	1	CAPACITOR, MOTOR RUNNING G160HS	47	155 429	1	HOUSING COVER G140S
	155 141	1	CAPACITOR, MOTOR RUNNING G180S		155 305	1	HOUSING COVER G160S, G160HS
9	155 247	1	PROTECTING RING G140, G160S, G160HS		155 149	1	HOUSING COVER G180S
10	155 154	1	NUT	48	023 218	1	DECAL, ADVANCE
11	155 155	1	LOCKWASHER	49	155 150	3	SCREW, G140S, G180S
12	155 156	1	WASHER		155 447	3	SCREW, G160S, G160HS
13	155 157	1	FAN	50	155 148	1	BUMPER, HOUSING COVER
14	155 159	1	WASHER	51	155 147	1	COVER, DRIP
15	155 161	1	MOTOR COVER, TOP				
16	155 162	2	BEARING				
17	155 432	1	STATIONARY SWITCH G140S				
	155 450	1	STATIONARY SWITCH G160S, G160HS				
	155 163	1	STATIONARY SWITCH G180S				
18	155 264	1	CENTRIFUGAL SWITCH G140S, G160S, G160HS				
	155 164	1	CENTRIFUGAL SWITCH G180S				
19	155 153	1	SCREW				
20	155 430	1	CORD ASSEMBLY G140S				
	155 448	1	CORD ASSEMBLY G160S, G160HS				
	155 151	1	CORD ASSEMBLY G180S				
21	155 434	1	ROTOR COMPLETE G140S				
	155 469	1	ROTOR COMPLETE G160S				
	155 452	1	ROTOR COMPLETE G160HS				
	155 166	1	ROTOR COMPLETE G180S				
22	155 167	1	RETAINING RING G140S, G180S				
23	155 270	1	HOUSING, RING GEAR G140S				
	155 471	1	HOUSING, RING GEAR G160S				
	155 453	1	HOUSING, RING GEAR G160HS				
	155 169	1	HOUSING, RING GEAR G180S				
24	155 170	1	OILSEAL G140S, G180S				
	155 327	1	OILSEAL G160S, G160HS				
25	155 174	2	RETAINING RING G140S				
	155 174	3	RETAINING RING G160S, G180S				
	155 174	4	RETAINING RING G160HS				
26	155 175	4	WASHER G140S				
	155 175	6	WASHER G160S, G180S				
	155 175	8	WASHER G160HS				
27	155 439	2	IDLER GEAR G140S				
	155 439	3	IDLER GEAR G160S				
	155 458	4	IDLER GEAR G160HS				
	155 176	3	IDLER GEAR G180S				
28	155 328	1	OILSEAL G140S, G160S, G160HS				
	155 177	1	OILSEAL G180S				
29	155 280	1	RETAINING RING G140S, G160S, G160HS				
	155 178	1	RETAINING RING G180S				
30	155 281	2	BEARING G140S, G160S, G160HS				
	155 180	2	BEARING G180S				
31	155 282	1	RING, OILSEAL G140S, G160S, G160HS				
	155 181	1	RING, OILSEAL G180S				
32	155 283	1	COVER, RING GEAR HOUSING G140S, G160S,				
	155 182	1	COVER, RING GEAR HOUSING G180S				
33	155 440	6	SCREW G140S, G160S				
	155 183	6	SCREW G160HS				
	155 183	8	SCREW G180S				
34	155 286	1	DRIVE CHECK G140S, G160S				
	155 461	1	DRIVE CHECK G160HS				
	155 184	1	DRIVE CHECK G180S				
35	155 325	1	RETAINING RING G140S, G160S, G160HS				
	155 185	1	RETAINING RING G180S				
36	155 237	1	HOUSING, IDLER GEAR G140S				
	155 472	1	HOUSING, IDLER GEAR G160S				
	155 457	1	HOUSING, IDLER GEAR G160HS				
	155 173	1	HOUSING, IDLER GEAR G180S				
37	155 464	1	RETAINING RING G160HS				
38	155 459	1	KEY G160HS				
39	155 436	1	PINION GEAR G140S, G160S				
	155 456	1	PINION GEAR G160HS				
	155 172	1	PINION GEAR G180S				