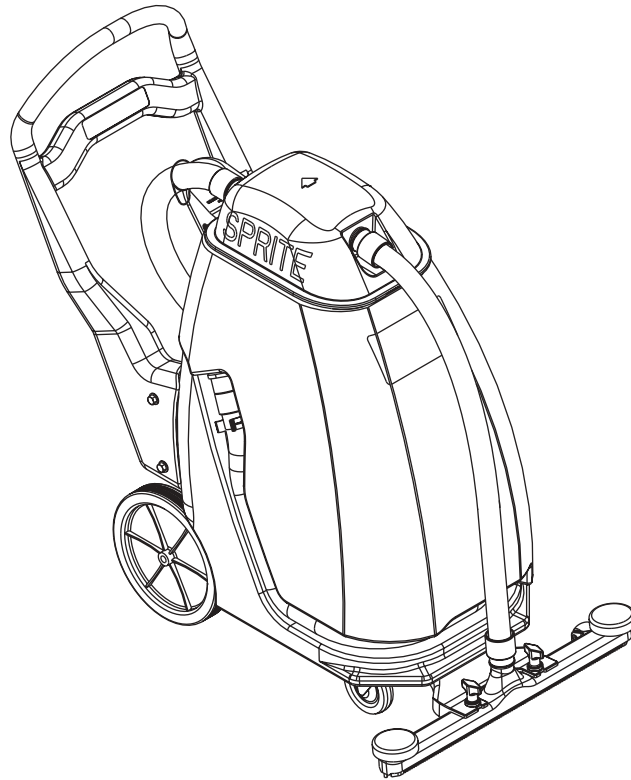


Sprite Air Scoop™ 12, 16

Sprite™ 12, 16



PARTS LIST

Advance MODELS 56209091, 56209092, 56209071, 56209072, the following MODELS are Obsolete 56209169, 56209170, 56209199, 56209220, 56209225, 56209123, 56209124, 56209144

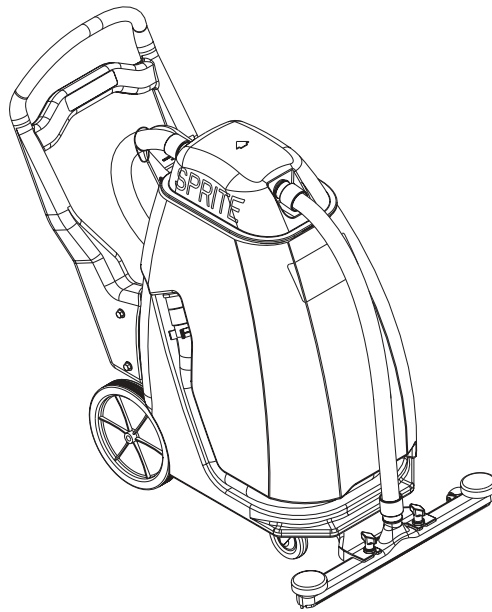
This parts list is for machines after serial number 1149855



Advance

by Nilfisk-Advance

8/96 revised 6/02 FORM NO. 56042311

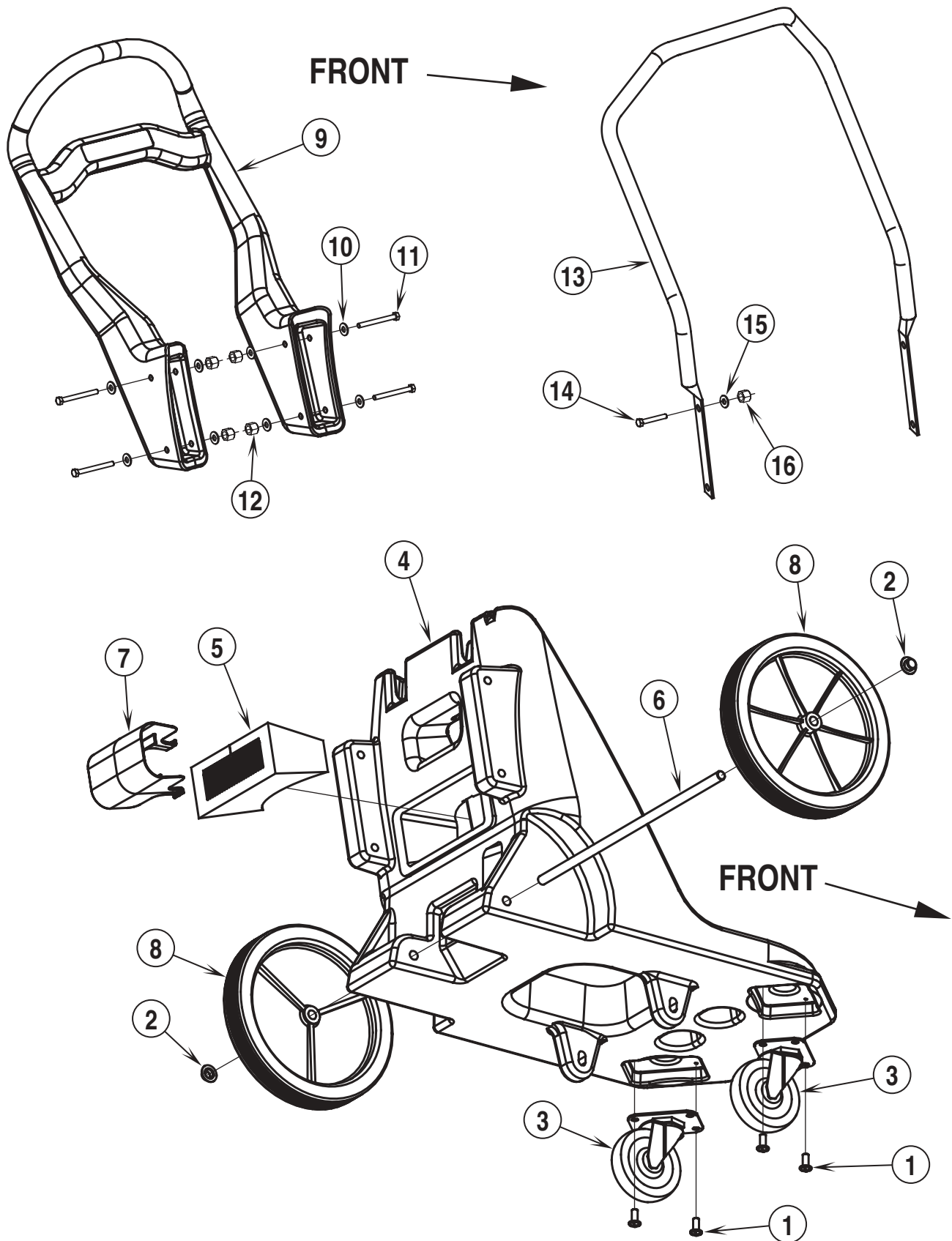


DESCRIPTION	PAGE
Handle and Chassis System	4-5
Vacuum Motor System	6-7
Tank System	8-9
Squeegee Lift System (Air Scoop)	10-11
Secondary Filter Kit	12
Dry Filter Bag Kit (optional)	13
Tip and Pour Assist Kit (optional)	14-15
Wiring Diagrams	16-17
Optional Tool Kits	18

WHEN ORDERING PARTS

- * Use the 8 digit numbers from the "Ref. No." columns in this parts list.
- * Specify the model and serial number of the machine.
- * Use the space below to record the model and serial number for future reference.

Model _____ Serial No. _____

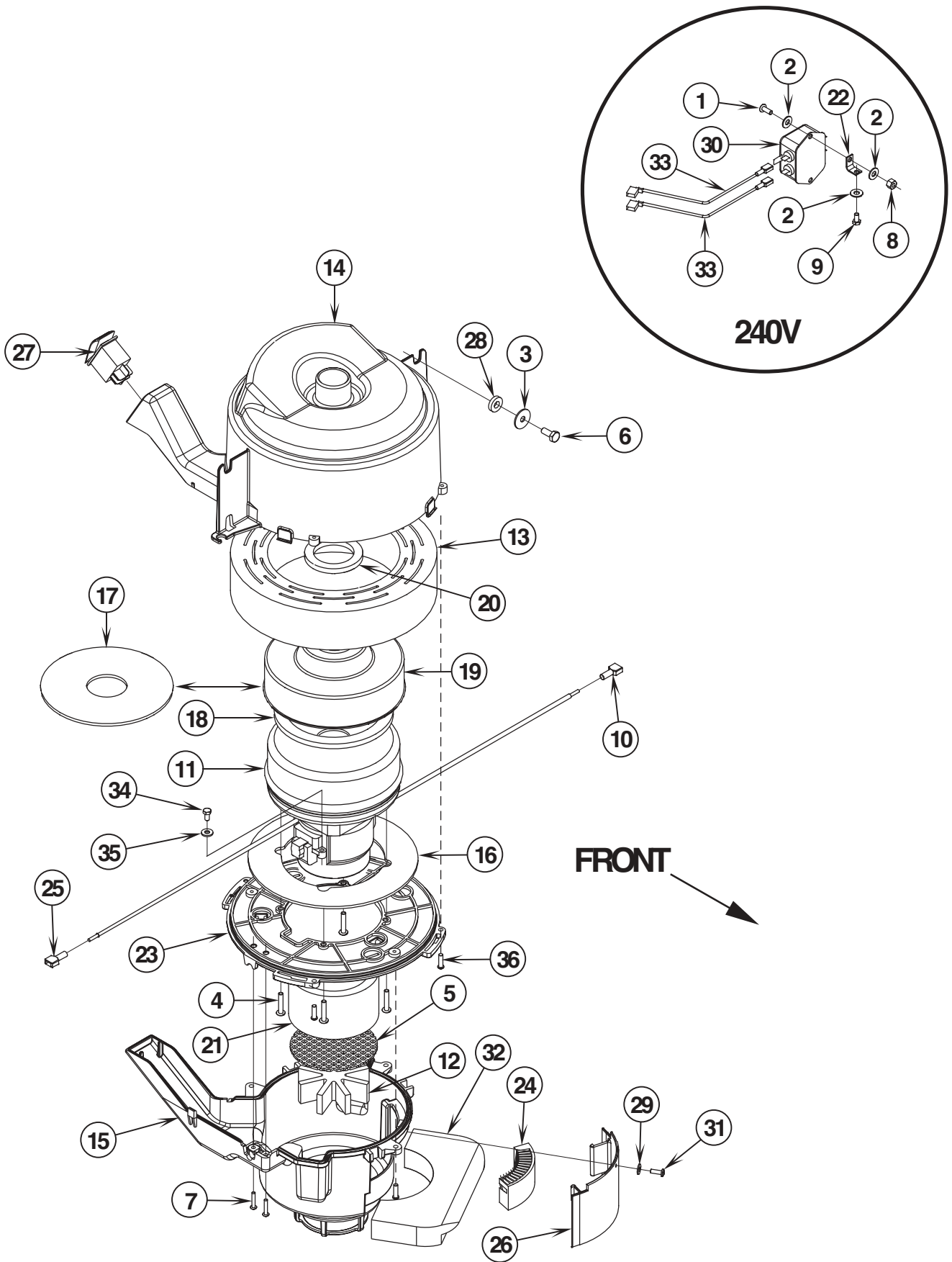


96-8	HANDLE AND CHASSIS SYSTEM		
01-5	Sprite 12/16		5

Item	Ref. No.	Qty	Description
1	56002155	4	Scr, Hex Hd 1/4-20 x .75
2	56009097	2	Nut, Push Cap 1/2
3	56209076	2	Caster, 4"
4	56209077	1	Chassis
5	56209087	1	Silencer
6	56209094	1	Axle, Wheel
7	56209177	1	Deflector, Exhaust
8	56249505	2	Wheel
9	56209079	1	Handle (Sprite) NOTE
*	56209202	1	Handle (Air Scoop-HP) NOTE
*	56209202	1	Handle (Sprite-HP) NOTE
*	56209079	1	Handle (Air Scoop) NOTE
10	56002910	8	Wsh, Flt SAE SS 3/8
11	56002284	4	Scr, Hex Hd 3/8-16 x 3.25
12	56002769	4	Nut, Hex Nyl Loc 3/8-16
13	56209247	1	Handle, Metal (240V)
	56209222	1	Handle, Metal (100V)
14	56002684	4	Scr, Hex Hd 3/8-16 x 1.75 (100V / 240V)
15	56002063	1	Wsh, Flt SAE 3/8
16	56002769	4	Nut, Hex Nyl Loc 3/8-16

* = Not Shown

NOTE: These handles are for 120V models only.



96-8	VACUUM MOTOR SYSTEM			
02-6	Sprite 12/16			7

Item	Ref. No.	Qty	Description
1	56001993	1	Scr, Pan Phil 10-24 x .50 (240V)
2	56002053	3	Wsh, Flt STD #10 (240V)
3	56009002	4	Wsh, Flt .266 x .906 x .060
4	56003112	4	Scr, Pan Phil Plastite 10-14 x 1.00
5	56209253	1	Screen
6	56001836	4	Scr, Hex Hd 1/4-20 x .62
7	56003331	2	Scr, Pan Phil SS 6-32 x .75
8	56009009	1	Nut, Hex Machine 10-24 (240V)
9	56009012	1	Scr, Hex Thd Form 10-24 x .38 (240V)
10	56469382	1	Term .250 Ins Tab
11	56209142	1	Motor, Vacuum (120V STD)
	56209095	1	Motor, Vacuum (120V HP)
	56209151	1	Motor, Vacuum (100V STD)
	56209152	1	Motor, Vacuum (100V HP)
	56209153	1	Motor, Vacuum (240V HP)
*	56203518	1	Carbon Brush Set (STD)
*	56228051	2	Bearing (STD)
*	56208191	2	Rotating Fan (STD)
12	56209080	1	Filter, Cool Air Intake
13	56209086	1	Dampener, Acoustical
14	56209097	1	Cover, Upper Motor TSBUS2002-818
15	56209099	1	Cover, Lower Motor TSBUS2002-818
16	56209116	1	Gasket, Motor
17	56209126	1	Plate, Stiffener (HP Model)
18	56209127	1	Gasket, Upper
19	56209210	1	Plate, Stiffener (STD Model)
20	56209129	1	Gasket, Motor Cover
21	56209172	1	Seal, Motor Lower
22	56209189	1	Bracket, RFI Filter (240V)
23	56209192	1	Base Assy, Motor TSBUS2002-818
24	56209195	1	Dampener, Cooling Air Acoustical
25	56469384	1	Receptacle Tab .25
26	56209251	1	Guard
27	56209321	1	Switch, Rocker DPST
28	56706095	4	Washer, Rubber
29	56002140	1	Wsh, Flt SAE #8
30	56324365	1	Filter Assy, RFI (240V)
31	56003093	1	Scr, Pan Phil Plastite 8-15 x .50
32	56209252	1	Deflector
33	56209200	2	Wire Assy (240V)
34	56009012	1	Scr, Hex Thd Form 10-24 x .38 (120V)
35	56009011	1	Wsh, Int Shprf #10 (120V)
36	56002738	7	Scr, Pan Phil Plastite 8-15 x .62
*	56209341	1	Cord Set, 14 x 2 x 50' Black (100V)
*	56209221	1	Cord Set, 14/3 x 50' Black (120V)
*	56209340	1	Cord Set, 2 x 1.00 x 50' Black (240V)
**	56209628	1	120V STD Power Module Kit (all items on this page)
**	56209629	1	100V STD Power Module Kit (all items on this page)
**	56209631	1	120V HP Power Module Kit (all items on this page)
**	56209632	1	240V HP Power Module Kit (all items on this page)
**	56209633	1	100V HP Power Module Kit (all items on this page)

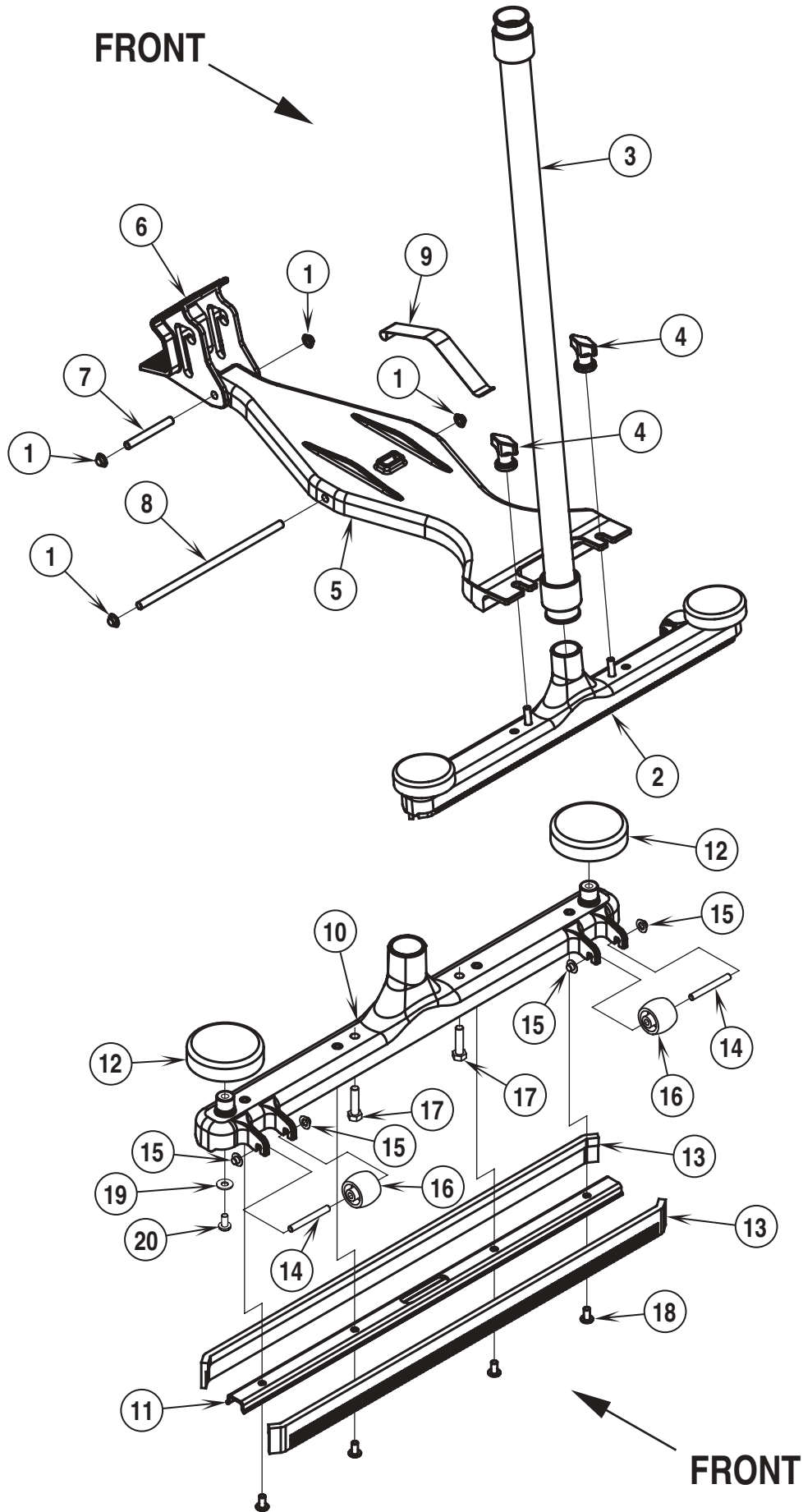
* = Not Shown

** = Optional

96-8	TANK SYSTEM		
01-5	Sprite 12/16		9

Item	Ref. No.	Qty	Description
1	56002894	1	Scr, Pan Phil SS 10-24 x .75
2	56391690	1	Ball, Float
3	56209078	1	12 Gallon Tank
*	56209178	1	16 Gallon Tank
4	56209108	1	Vacuum Motor Hose
5	56209109	1	Drain Hose
6	56209114	1	Stopper, Rubber
7	56209176	1	Plug, Hose
8	56209081	1	Printed Gray Cover Assembly (std / 120V models) (#2, 11-18)
	56209229	1	Printed Clear Cover Assembly (optional / 120V models) (#2, 11-18)
	56209184	1	Gray Cover Assembly (std 240V models) (#2, 11-18)
	56209230	1	Clear Cover Assembly (optional 240V models) (#2, 1-18)
	56209135	1	Clear Cover Assembly (100V 12A/S) (#2, 11, 12, 14-18)
9	56250266	1	Clamp, Plastic
10	56329145	2	Clamp, Hose 324
11	56002849	3	Nut, Hex Nyl Loc-Thin SS 10-24 (Qty. 2 - 56209135)
12	56002896	4	Scr, Pan Phil SS 10-24 x .62 (Qty. 2 - 56209135)
13	56002916	4	Wsh, Flt SAE SS #10
14	56209261	2	Washer, Sealing 9/16
15	56209082	1	Cover, Printed Gray Dome (std / 120V models)
	56209197	1	Cover, Printed Clear Dome (optional / 120V models & model #56209220)
	56209110	1	Cover, Gray Dome (std / 240V models)
	56209196	1	Cover, Clear Dome (std / 240V models)
16	56209083	1	Gasket, Cover
17	56209084	1	Elbow, Float
18	56324497	2	Cage, Float

* = Not Shown



96-8	SQUEEGEE LIFT SYSTEM (AIR SCOOP)		
01-5	Sprite 12/16		11

Item	Ref. No.	Qty	Description
1	56009123	4	Nut, Push Cap 3/8
2	56209088	1	24" Squeegee Assy STD (#10-20)
	56209089	1	30" Squeegee Assy OPT (#10-20)
3	56209109	1	Hose Ass'y 1.50
4	56209154	2	Nut, Thumb
5	56209158	1	Squeegee Lift
6	56209159	1	Pedal
7	56209160	1	Axle,Pedal
8	56209161	1	Axle,Base
9	56209162	1	Spring
10	56209155	1	Housing, Squeegee 24"
*	56209156	1	Housing, Squeegee 30"
11	56209130	1	Retainer, Squeegee 24"
*	56209131	1	Retainer, Squeegee 30"
12	56209157	2	Bumper,Side Roller
13	56105533	2	Blade 24"
*	56105509	2	Blade 30"
14	56209150	2	Axle
15	56009132	4	Nut, Push Cap 1/4
16	56329554	2	Roller
17	56002884	2	Scr,Hex Hd SS 5/16-18X1.25
18	56003119	4	Scr,Pan Phil SS 1/4-20X.50
19	56009205	2	Wsh, Flt SS #10
20	56009237	2	Scr, Pan Phil SS Type 8 10-16 x .38
**	56209254	A/R	24" Squeegee Lift Kit (#1-20)
**	56209219	A/R	30" Squeegee Lift Kit (#1-20)

* = Not Shown

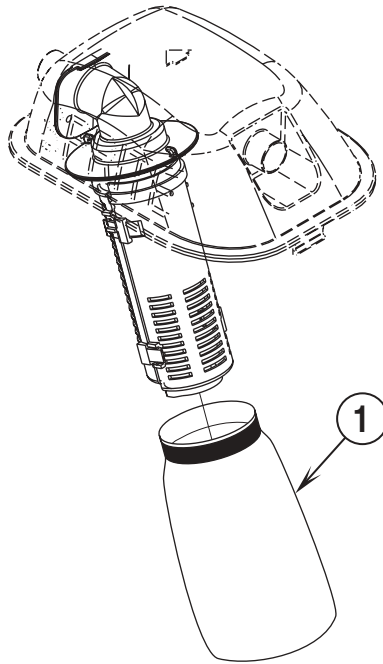
** = Optional

SECONDARY FILTER KIT

96-8

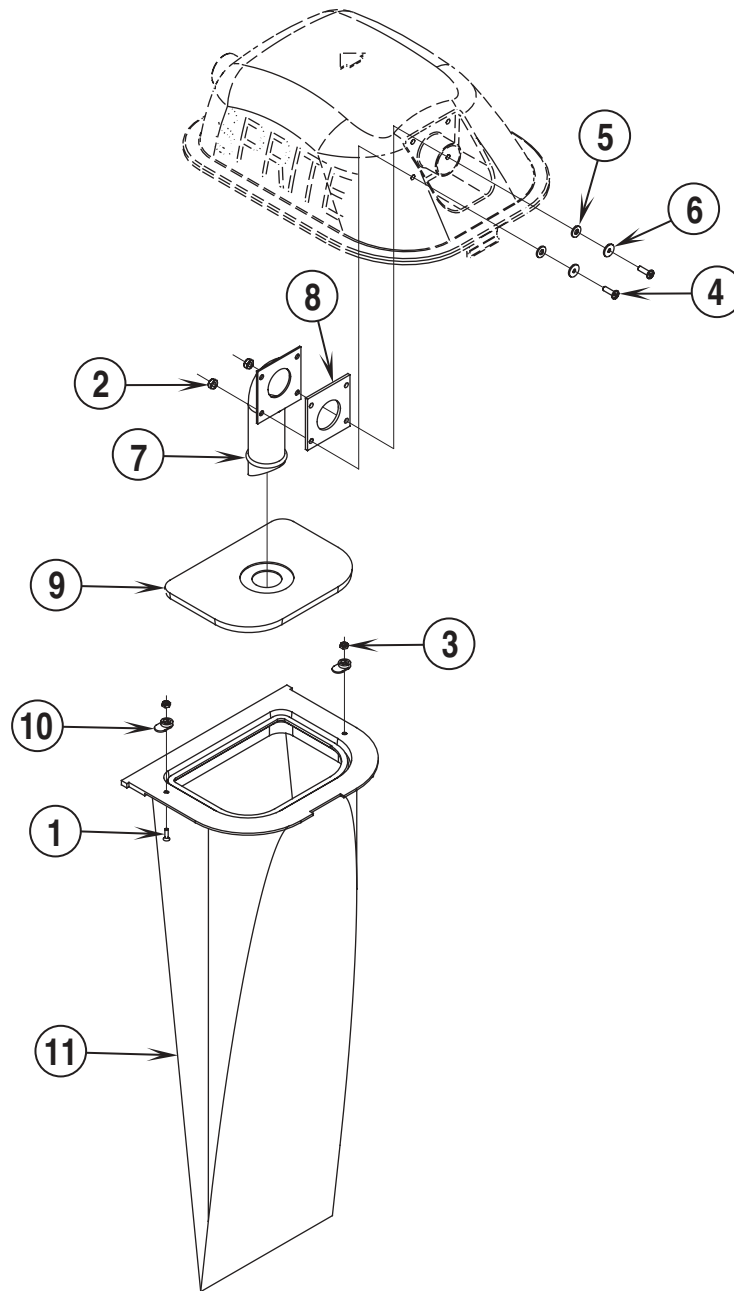
12**Sprite 12/16**

01-5



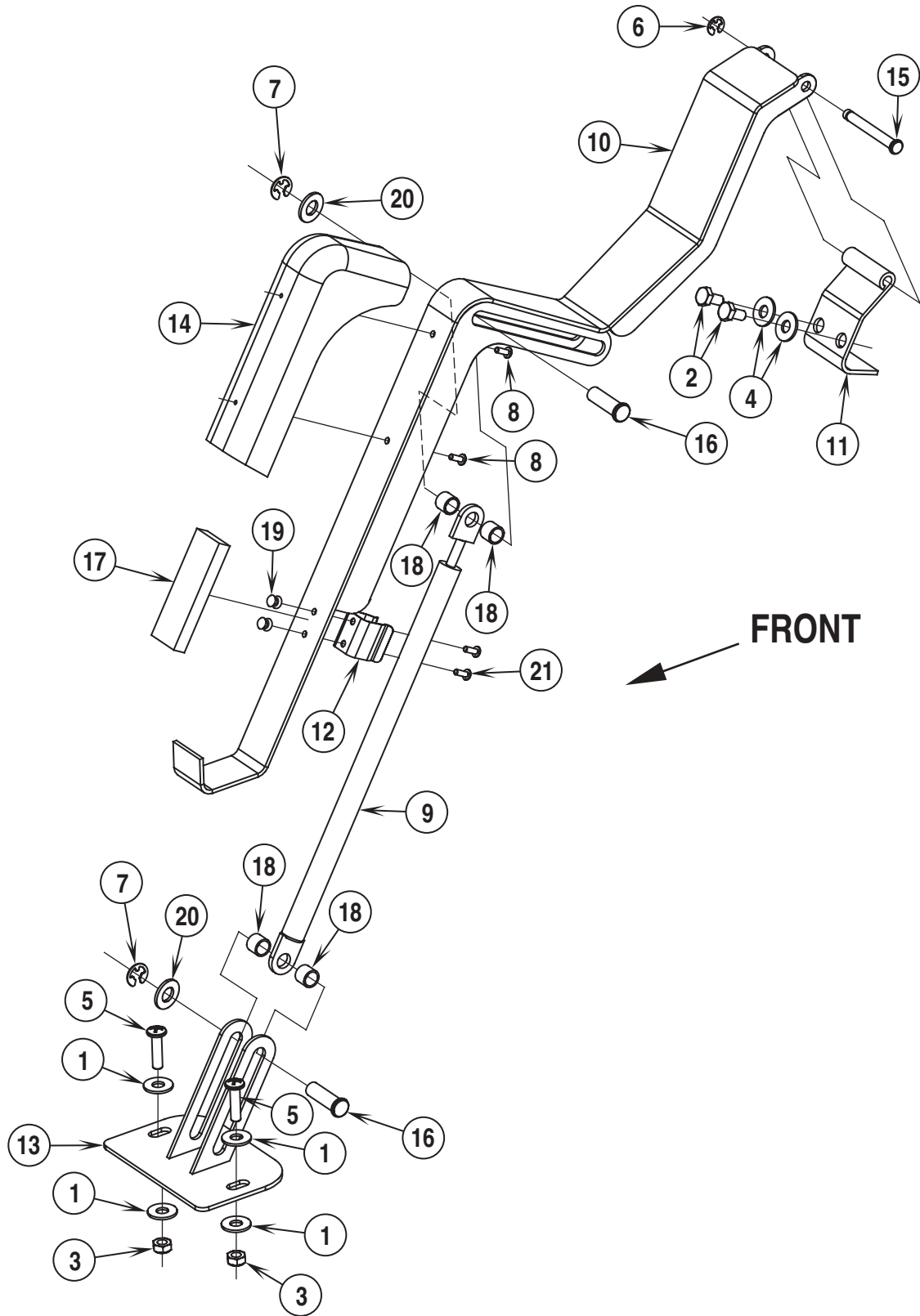
Item	Ref. No.	Qty	Description
	56209490	1	Secondary Filter Kit 70 PPI (std.)
	56209268	1	Secondary Filter Kit 100 PPI (opt.)
	56040624	1	Instruction Sheet
1	56209269	1	Filter, 70 PPI (kit 56209490)
	56209267	1	Filter, 100 PPI (kit 56209268)

***Note:** Standard on Sprite, optional on Sprite Air Scoop.



Item	Ref. No.	Qty	Description
	56209256	1	Dry Filter Bag Kit (#1-11)
*	56040577	1	Instruction Sheet
1	56002816	2	Scr, Flt Phil 6-32 x .50
2	56002849	4	Nut, Hex Nyl Loc-Thin SS 10-24
3	56002864	2	Nut, Hex Nyl Loc-Thin 6-32
4	56002896	4	Scr, Pan Phil SS 10-24 x .62
5	56002916	4	Wsh, Flt SAE SS #10
6	56009200	4	Wsh, Flt Neoprene
7	56209239	1	Tube
8	56209240	1	Gasket
9	56209241	1	Cloth Bag Cover Assy
10	56209244	2	Clip, Bag
11	56209246	1	Cloth Bag Assy
*	56209258	1	Template

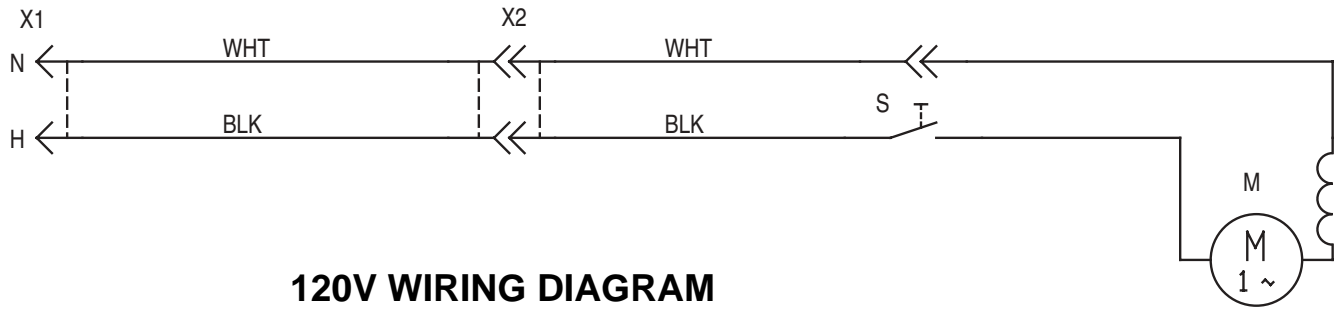
* = Not Shown



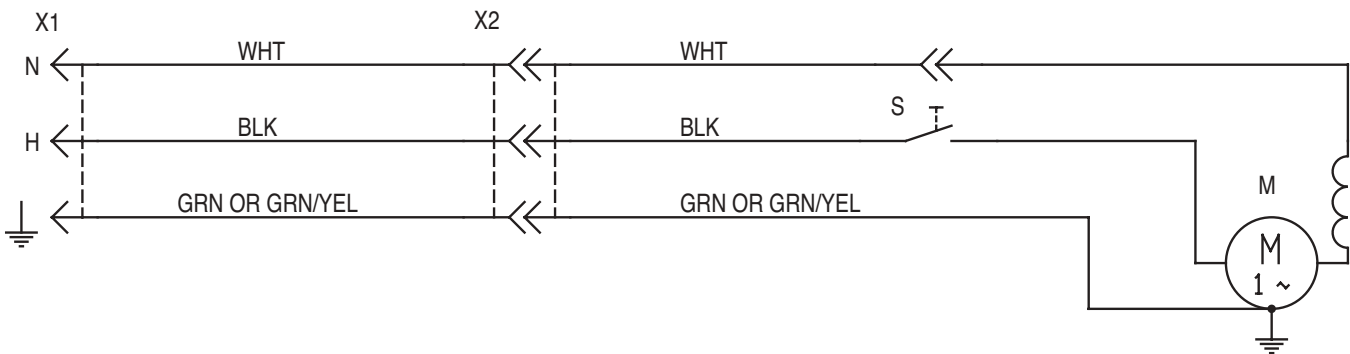
Item	Ref. No.	Qty	Description
	56209257	1	Tip and Pour Assist Kit (#1-21)
*	56040578	1	Instruction Sheet
1	56001906	4	Wsh, Flt Std 1/4
2	56002801	2	Scr,Hex Hd SS 1/4-20X.50
3	56002850	2	Nut,Hex Nyl Loc-Thin SS 1/4-20
4	56002914	2	Wsh, Flt STD SS 1/4
5	56003067	2	Scr,Pan Phil SS 1/4-20X1.00
6	56003268	1	Ring, Ret Ext Type E Reinf. 0.25 Dia
7	56003269	2	Ring, Ret Ext Type E Reinf. 0.38 Dia
8	56009178	2	Scr, Pan Phil Thd Form 6-32X.38
9	56209119	1	Cylinder, Gas
10	56209120	1	Weldment, Lift Assist
11	56209121	1	Hinge, Assist
12	56209194	1	Spring Clip
13	56209205	1	Weldment, Base
14	56209208	1	Bracket, Lift Assist
15	56209211	1	Pin, Grooved, .250X1.190
16	56209213	2	Pin, .375X1.25
17	56209214	1	Pad, Foam
18	56209235	4	Bushing
19	56002864	2	Nut, Hex Nyl Loc-Thin 6-32
20	56009047	2	Wsh, Flt .39 x .62 x .06
21	56009044	2	Scr, Pan Phil 6-32 x .31

* = Not Shown

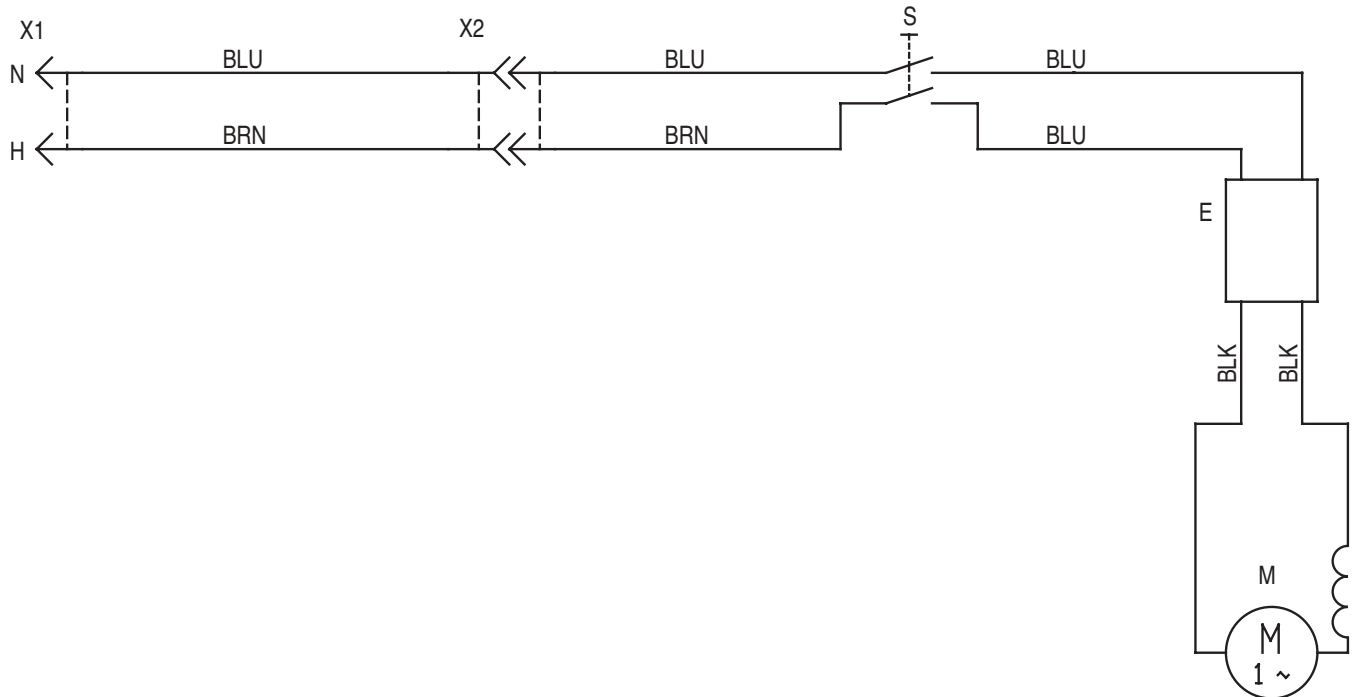
100V WIRING DIAGRAM



120V WIRING DIAGRAM



240V WIRING DIAGRAM



100V WIRING DIAGRAM

Item	Ref. No.	Qty	Description
S	56262551	1	Switch, Main
M	56209151	1	Motor, Vacuum (STD Model)
	56209152	1	Motor, Vacuum (HP Model)

120V WIRING DIAGRAM

Item	Ref. No.	Qty	Description
S	56262551	1	Switch, Main
M	56207802	1	Motor, Vacuum (STD Model)
	56209095	1	Motor, Vacuum (HP Model)

240V WIRING DIAGRAM

Item	Ref. No.	Qty	Description
E	56324365	1	Filter Assy, RFI
S	56260204	1	Switch, Main
M	56209153	1	Motor, Vacuum

OPTIONAL TOOL KITS

96-8

18**Sprite 12/16**

01-5

Ref. No.	Qty	Description
56209224	1	Standard Tool Kit (standard on Sprite / optional for Sprite Air Scoop)
56204213	1	Vacuum Hose 1.50" Assembly
56100376	1	11" Crevice Tool
56100375	1	5" Upholstery Tool
56100377	1	3" Round Dusting Brush
56209233	1	14" ABS Squeegee
56209234	1	54" Two Piece Two Bend Chromed Steel Wand
56100372	1	14" Hard Floor Tool
56100373	1	14" Soft Floor Tool
56390001	1	Dry Pick Up Kit (optional)
56205314	1	14" Vandar Carpet Tool
56205414	1	14" Vandar Bristle Tool
56204528	1	Crevice Tool
56701088	1	Dust Brush Tool
56701093	1	Upholstery Tool
56701023	1	Slide-On Brush
56390000	1	Wet Pick Up Kit (optional)
56205114	1	14" Vandar Squeegee Tool
56202088	1	Steel Wand
56204213	1	1.50" x 10' Hose Assembly
56209514	1	Tool Caddy (optional) (holds tools listed above)



Nilfisk-Advance, Inc.
14600 21st Avenue North
Plymouth, MN, 55447-3408
www.nilfisk-advance.com
Phone: 800-989-2235
Fax: 800-989-6566
©2000 Nilfisk-Advance, Inc.,
Plymouth, MN 55447-3408
Printed in the U.S.A.