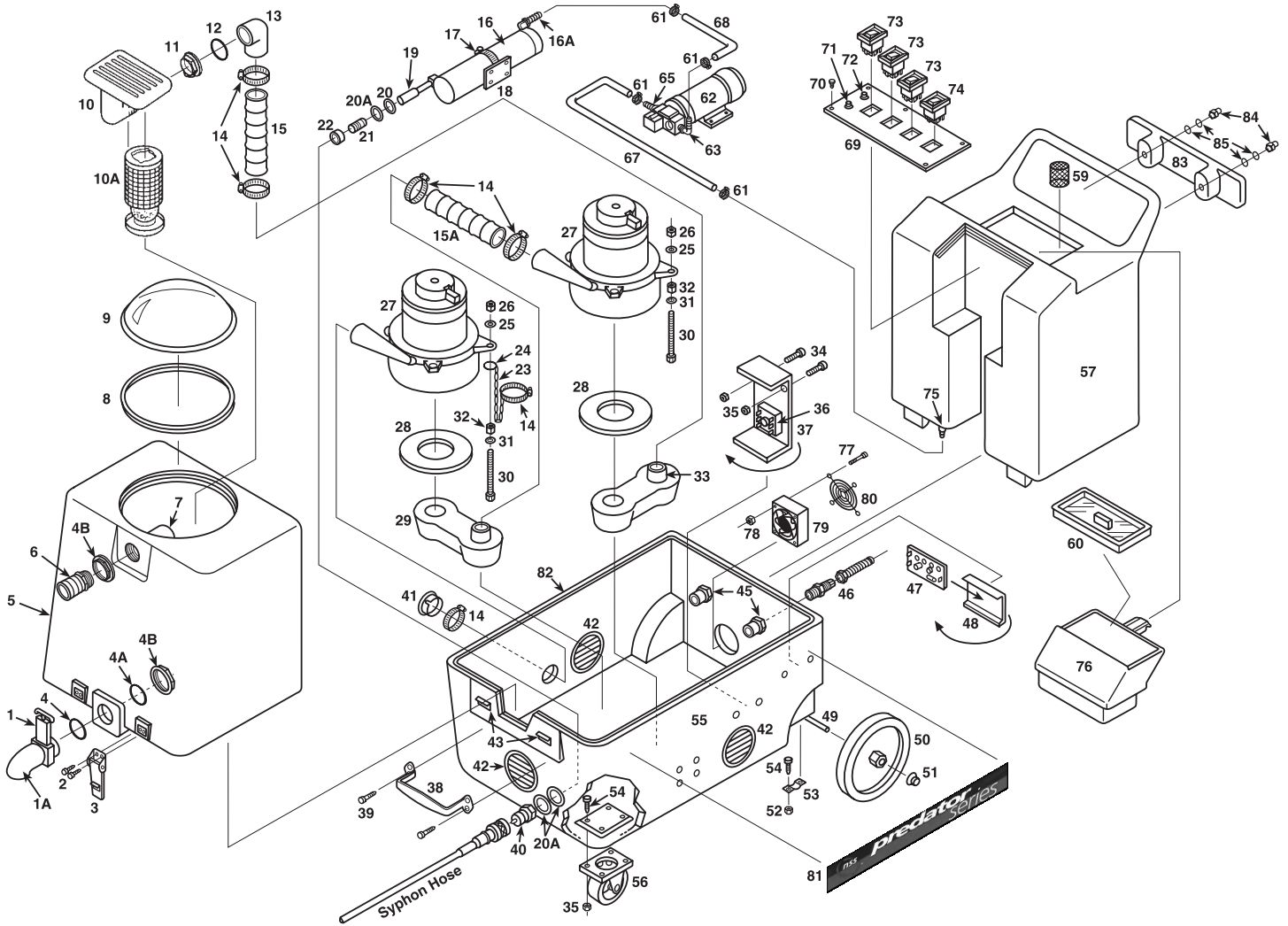


# PREDATOR CXH150



# INFORMATION & OPERATING INSTRUCTIONS

**DO NOT OPERATE MACHINE UNTIL YOU HAVE READ THIS SECTION  
IMPROPER USE OF THE PREDATOR CHX150 WILL VOID THE WARRANTY**

1. Always use a rag to prevent burns when handling quick-disconnects.
2. Always use a defoamer when foaming occurs to prevent vacuum motor damage.
3. To keep fitting and lines from damage during freezing conditions, use an anti-freeze in the pump and heater or keep equipment inside heated areas.
4. Do not let pump run dry.

## **INSPECTION:**

Carefully unpack and inspect the PREDATOR CXH150 for shipping damage. Each unit is tested and inspected before shipment. Any damage incurred is the responsibility of the carrier, who should be notified immediately.

## **CLEANING SOLUTIONS:**

We recommend liquid cleaning chemicals. Powders may be used, but unless mixed very thoroughly, they could cause build-up in the lines, pump, quick-disconnects, etc. A pH of 7-9 is strongly recommended to avoid premature pump wear, which would void the warranty.

## **MAINTENANCE:**

For optimum performance, flush the machine with clear water at the end of each working day. Once a month, minimum, run a flushing compound through the machine to cut any alkaline build-up that may have formed.

Lubricate wheels, casters and hinges as needed. The pump and vacuum motors do not require any maintenance.

The body can be cleaned with a general all-purpose detergent and protected with a silicone type product like Armor All®. The quick-disconnects should be lubricated with silicone, also.

Prior to each job, inspect the holding tank filter and the recovery tank float filter for hair and dirt. The drain valve should also be inspected regularly and kept free of any debris or build-up.

## **SET-UP:**

Fill the holding tank with clear water and the detergent of your choice. Mix well. Although this machine is designed to supply instant hot water, the addition of warm or hot water to the holding tank would be a plus factor.

1. Plug in cord #1, identified by the 4" long red band on the end of the cord. (This cord runs the pump and vacuums).
2. Turn on the pump and spray through the cleaning tool for a few seconds to fill the lines with solution.
3. Plug in cord #2. IF THE GREEN LIGHT ILLUMINATES, THE HEAT EXCHANGER WILL TURN ON AUTOMATICALLY (SEE NOTE BELOW). Wait 2 minutes for the heat exchanger to reach operating temperature. You may now begin cleaning. It will take about 10 seconds for the initial heat to reach the wand.

**NOTE: If the green circuit indicator light does not illuminate when cord #2 is plugged in, then both cords are on the same circuit. Try other outlets until the light comes on. See bypass switch section (below) if you are unable to get a green light.**

## **BYPASS SWITCH:**

The bypass switch completely bypasses the circuit locator. Use this feature when you cannot get the green light to come on and you believe that the two cords are on separate circuit breakers.

**CAUTION: If the bypass switch is on and the two cords are plugged into the same circuit breaker, the breaker will blow.**

## **ELECTRIC CIRCUIT LOCATOR:**

This unique, patented "smart system", operated by a solid state circuit, will inform the operator when the two cords are plugged into separate lines by illuminating the green indicator light. This helps prevent tripping circuit breakers.

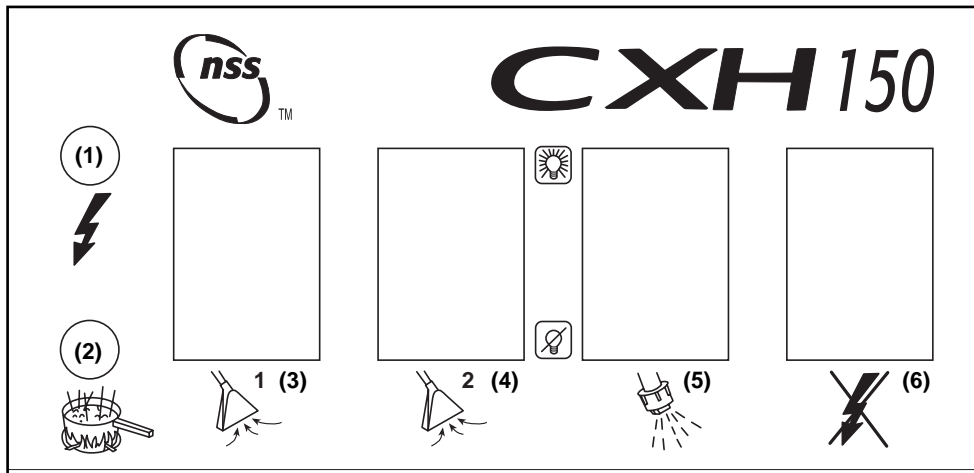
## **BALL FLOAT VACUUM SHUTOFF:**

When the recovery tank is full, the ball float system will shut off the incoming air flow and prevent water from entering the vac motor(s). The float will not work in heavy foam. Always use a defoamer to prevent overflow. Once the float is activated, the vac switches must be turned off and the recovery tank emptied.

**CAUTION: To avoid vac motor damage, always make sure the filter is clean and the float travels freely before turning on the machine. Use a defoamer whenever foam is present. Water damage to the vac motors is not covered by the warranty.**

## **SAFETY PRECAUTIONS:**

All extension cords must have a rating of at least 12/3 (#12 cord). Extension cords should be no longer than 50 feet. Replace the plug immediately if the ground prong becomes damaged or is broken off. Not only is the ground necessary for safety, but the circuit locator system will not operate correctly without it.



**CIRCUIT LOCATOR (1):** When this light is on, it indicates that cord #2 is on a separate line from cord #1. Cord #2 supplies voltage to the heater allowing it to heat to the proper temperature range.

**HEAT MODE LIGHT (2):** This light will only illuminate when the heater is heating and will turn off when it reaches operating temperature.

**VACUUM SWITCH (3 & 4):** Each switch turns on one vac motor. Turn both switches on for maximum lift. The vac switches illuminate when turned on.

**PUMP SWITCH (5):** This switch will illuminate when the pump is on.

**BYPASS SWITCH (6):** The bypass switch will illuminate when it is activated and will completely bypass the circuit locator. Use this feature only when the circuit locator light will not operate and you know each cord is on a separate circuit breaker.

**CAUTION: WHEN THE BYPASS SWITCH IS ON, THE CIRCUIT BREAKER CAN BLOW IF BOTH CORDS ON THE SAME CIRCUIT.**

ARE